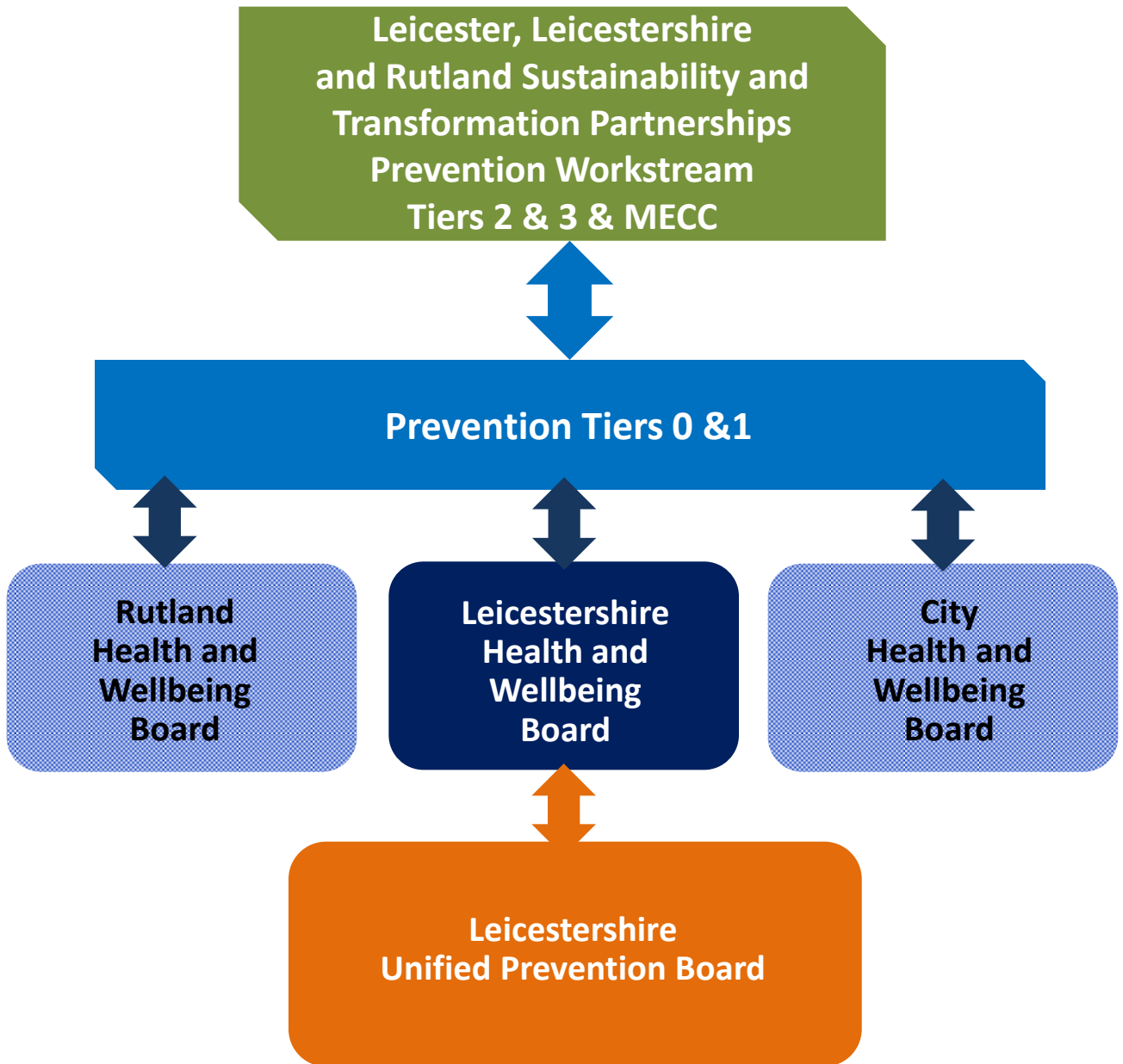
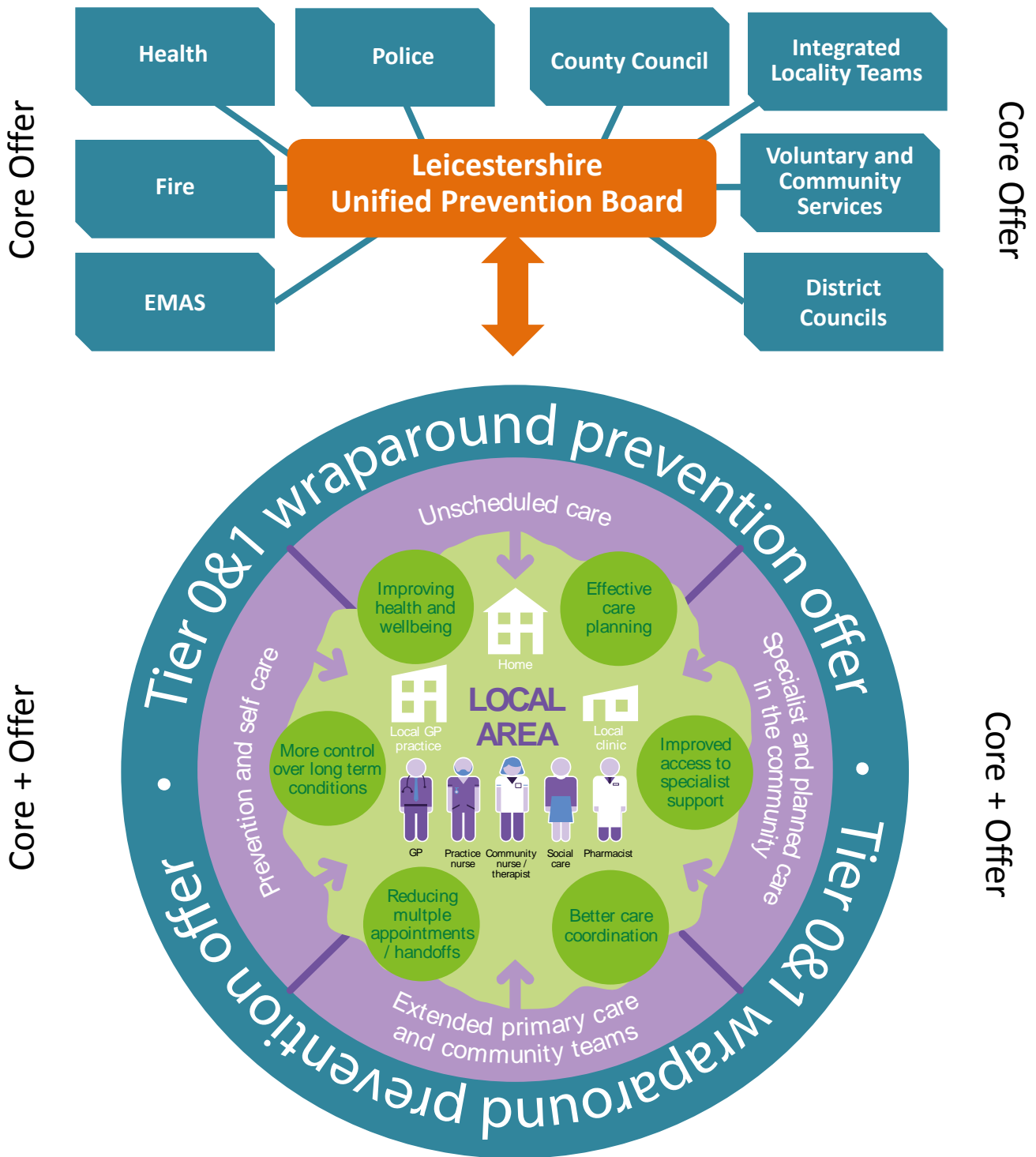


Leicestershire Prevention Model



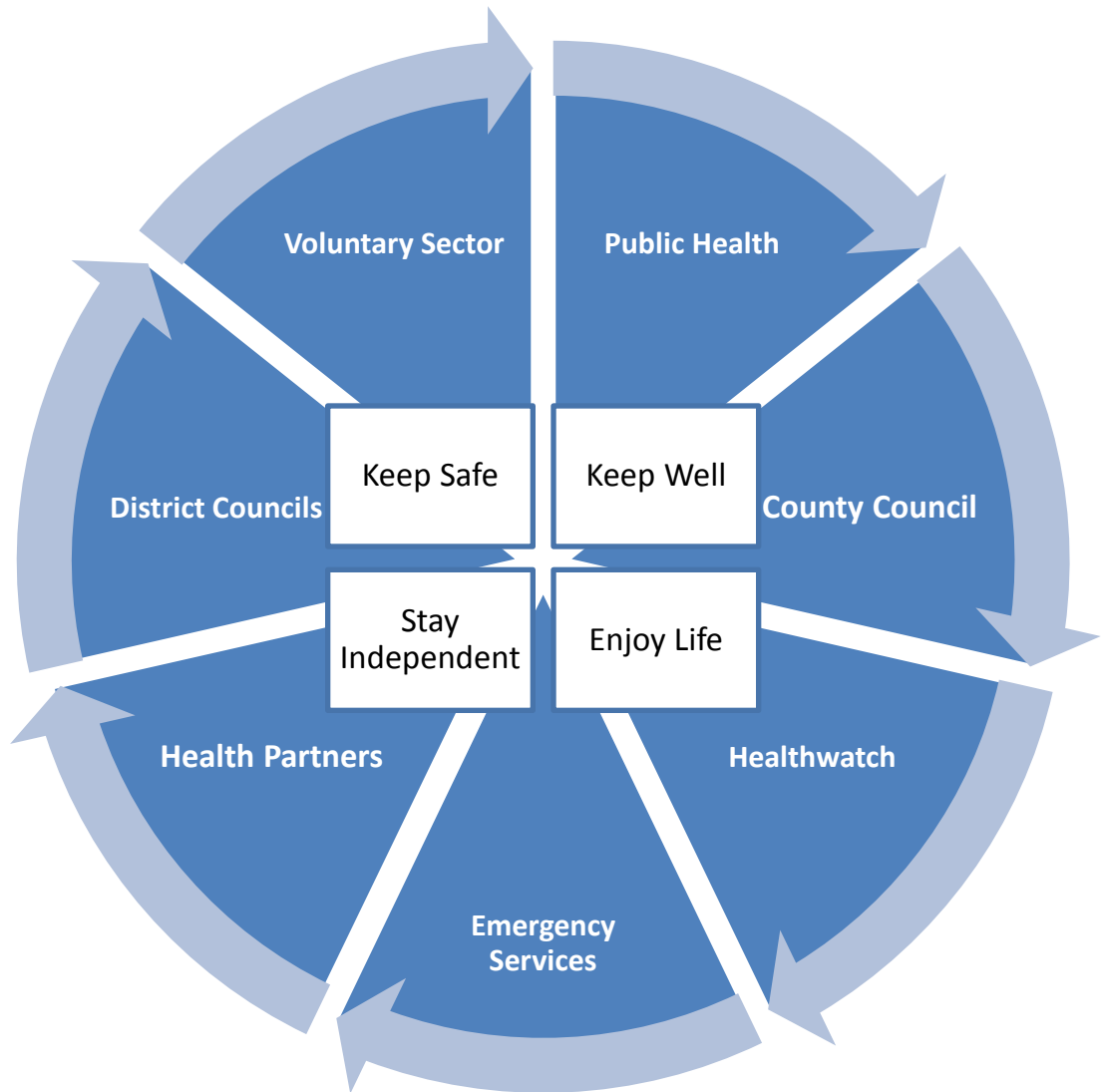
Tier 0	Community Capacity	Helping communities to build capacity and enabling them to support themselves and rely less on specific council, health and emergency services resources
Tier 1	Primary Prevention	Maintaining independence, supporting good health and wellbeing through high quality information and advice and programmes to develop self-help behaviour
Tier 2	Secondary Prevention	Targeted prevention for individuals identified as being at risk of specific conditions, events or behaviours
Tier 3	Tertiary Prevention	Reducing more established needs

Leicestershire Prevention Delivery Model



“Core” and “Core +” delivery through Integrated Locality Teams and Districts.

UPB Key Outcomes



Your Integrated Locality Teams

(Leicester, Leicestershire and Rutland)

A new innovative approach to joint working in your community

Our model of integration wraps around the patient and their GP practice, extending the care and support that can be offered in the community. This will be delivered through the development of new multidisciplinary locality teams who will be jointly responsible for patient care and initially concentrate on specific groups of patients.

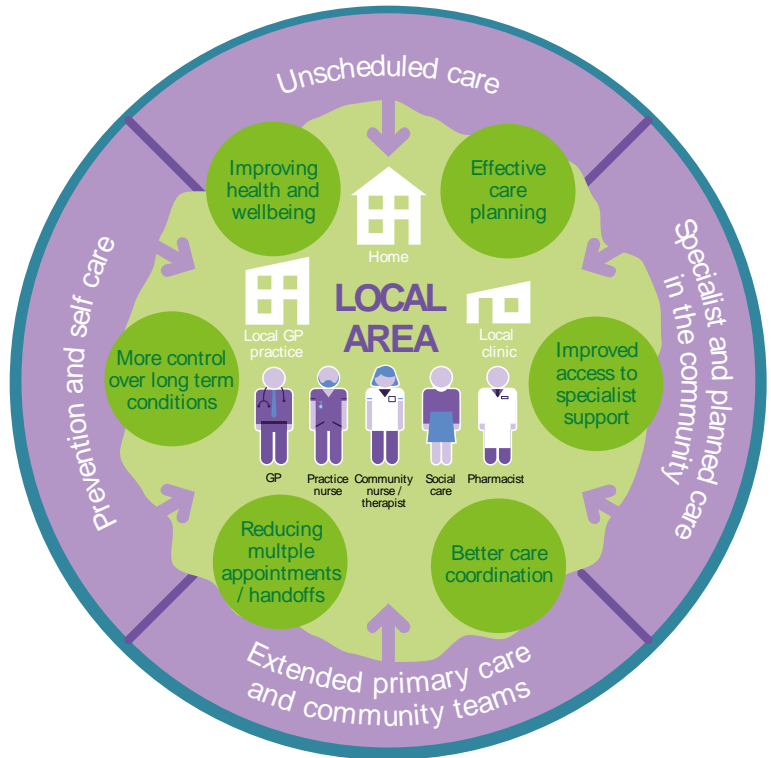
Cohorts:

The specific groups of patients who will initially benefit from this model in Leicester, Leicestershire and Rutland from April 2017 are:







- Adults with five or more chronic conditions
- People with a frailty marker regardless of age (impaired function)
- Adults whose acute care costs are predicted to be three times the average over the next 12 months

Specialist support examples:

- Community psychiatric services
- Palliative care services



LLR System Benefits

-  Reducing the number of permanent admissions to residential care
-  Supporting people to recover and be reabled at home - enabling people to stay in their home for longer
-  Reducing the number of bed days and delayed transfers from hospital
-  Reducing emergency admissions and readmissions
-  Reducing falls
-  Integrating data